



INTRODUCING
LAPAIDION ONE
Condos & Townhomes

**“Convenience, Charm, and Location, all
in one Gated Community!”**



LaPaidion
Homes *Let Your Story Begin*



*Let Your
Story Begin*



LaPaidion One

A new residential development located on Adonis Drive, West Bay, just a few minutes commute to Camana Bay and Seven Mile Beach, shopping, recreation, and dining, but still nestled in an area away from the crowd and intrusion.

Within the gates of this new and exciting development, you will find the layout for 8 blissful town-homes and 12 condominiums of a modern urban design. The 8 town-homes boasts their own over-sized private patio, balcony on each floor, and a stunning garden view or a lookout over the the North Sound.

The condominiums are beautifully laid out with a private back and front patio. The grounds have adequate green spaces, a clubhouse, gym, pool, strata office, and a roof-deck patio ideal for dining, socializing, or a private party.

LaPaidion One combines luxury with convenience, with an offering of beautiful indoor and outdoor living spaces, that attract natural lighting through its excellent architecture and interior design. Each Town-home features 3 bedrooms + 3.5 bathrooms with an approximate 200 sq. ft. private patio. The Condominiums are 1 bedroom + 1 bathroom, and 2 bedrooms + 2 bathrooms. Plotted out in this cozy gated community, town-homes are a part of a Raw Land Strata giving the same feel as owning a private dwelling.

In addition, for the 3 Bedroom Raw Land Strata's the stamp duty is only paid on the land **IF** purchased before the 31st of December 2019!

The residences will have insulated roof and interior walls, high quality wood-look porcelain tiles, granite counters, stainless steel appliances, wooden cabinets, and more.

Contact us and we will be happy to discuss this exciting development in greater detail.

Phase 1 Units will be available for occupancy at the end of September 2020 and Phase 2 units will be available at the end of Summer 2021. The developers reserve the right to commence Phase 2 earlier than projected.

Development Layout

Building 1 - Condominiums

- 1 bedroom
- 2 bedroom

Building 2 - Condominiums

- 1 bedroom
- 2 bedroom

Building 3- Townhomes

- 3 bedroom

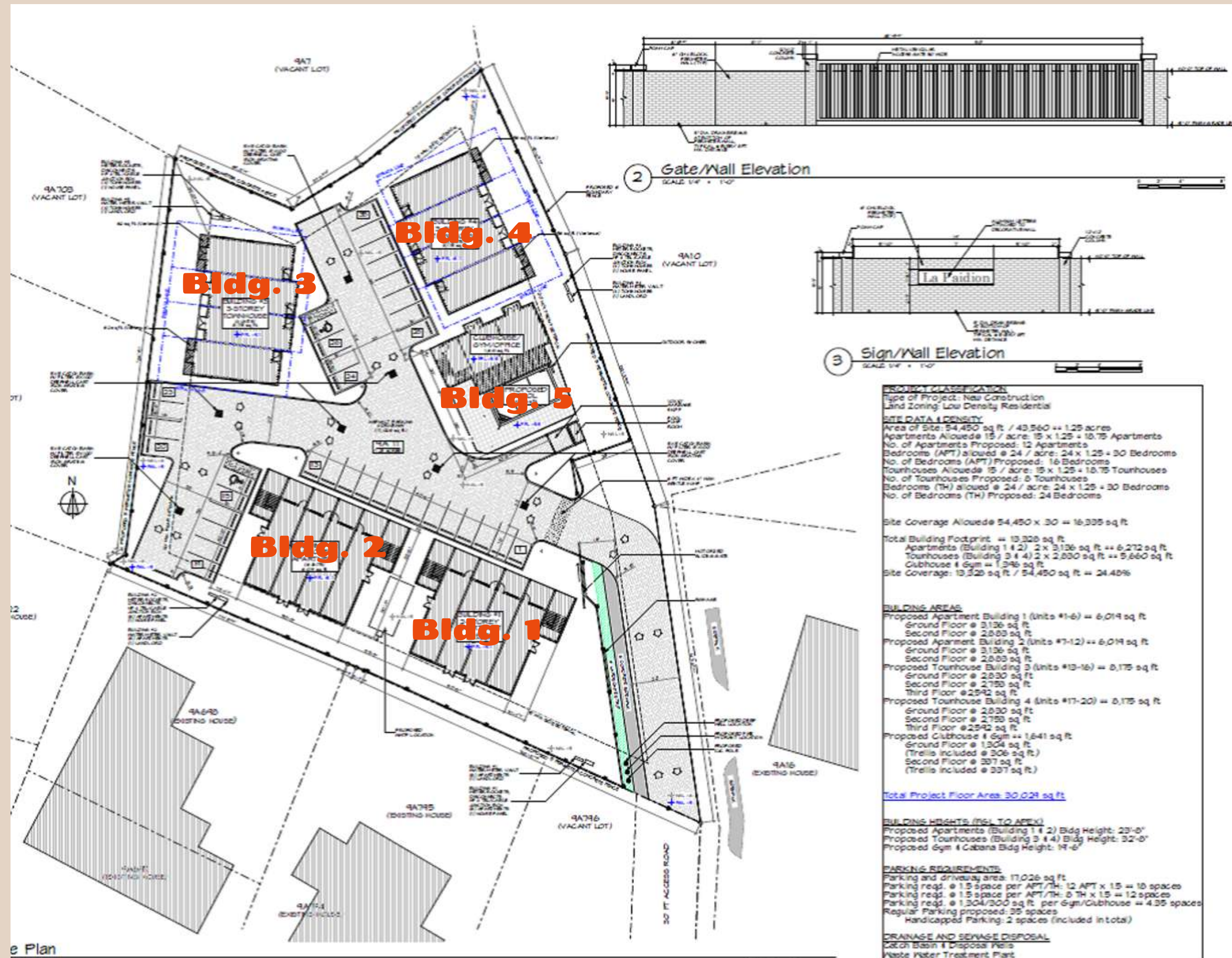
Building 4 - Townhomes

- 3 bedroom

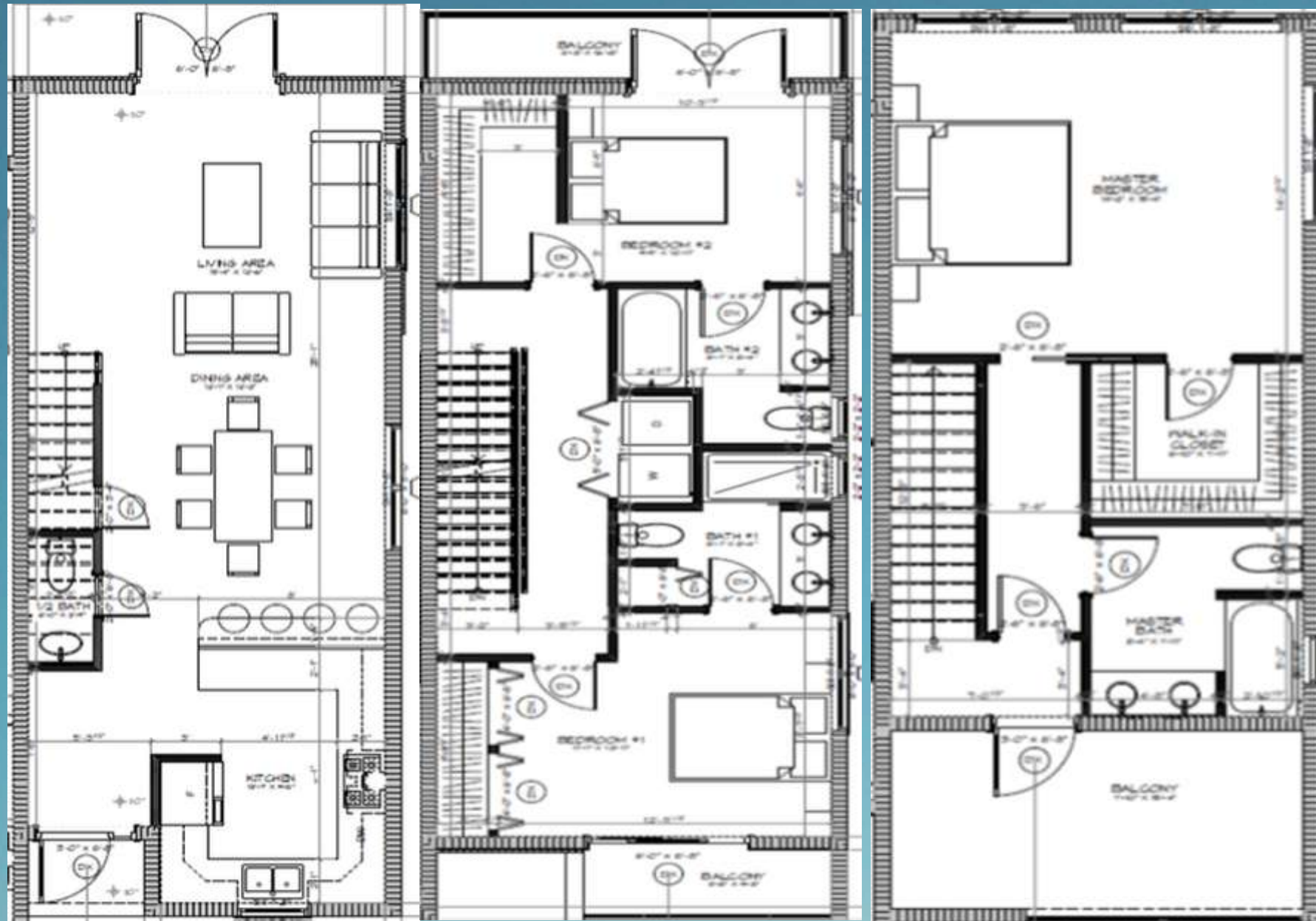
Building 5 - Clubhouse, Gym Strata Office

PHASE 1 - Bldg 2 & 3

PHASE 2 - Bldg 3, 4 & 5



3 BEDROOM TOWN-HOMES

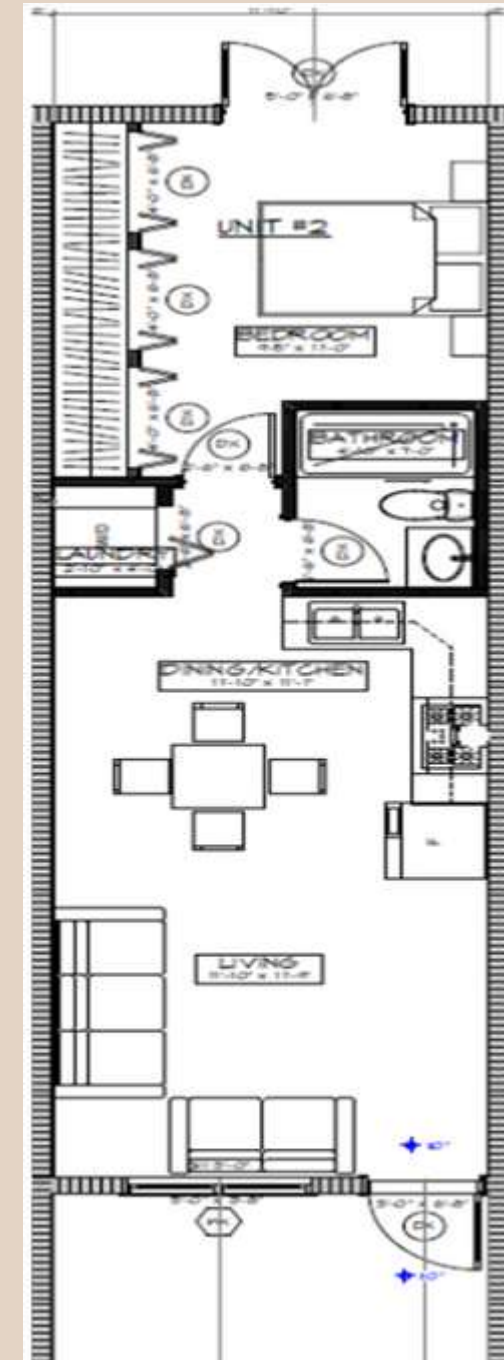


Ground Floor
707 sq. ft.

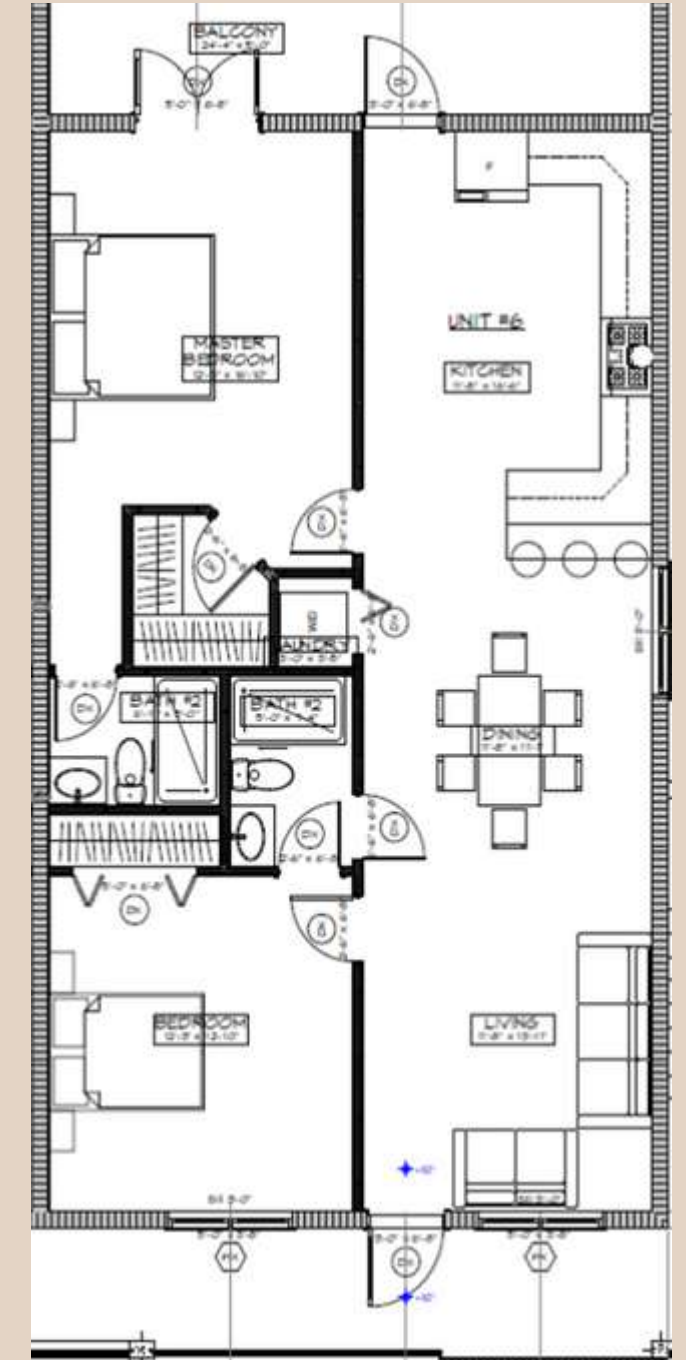
Second Floor
688 sq. ft.

Third Floor
635 sq. ft.





**1 bedroom
784 sq. ft.**



**2 bedroom
1441 sq. ft**





Welcome to

LAP Aidion ONE

Quiet & Peaceful Living

**Interior Specifications
Condominium & Townhomes**



MATERIALS



Floor Option 1: Dark



Floor Option 2: Light



Interior Paint



Accent 1: Light Gray



Accent 2: Dark Gray

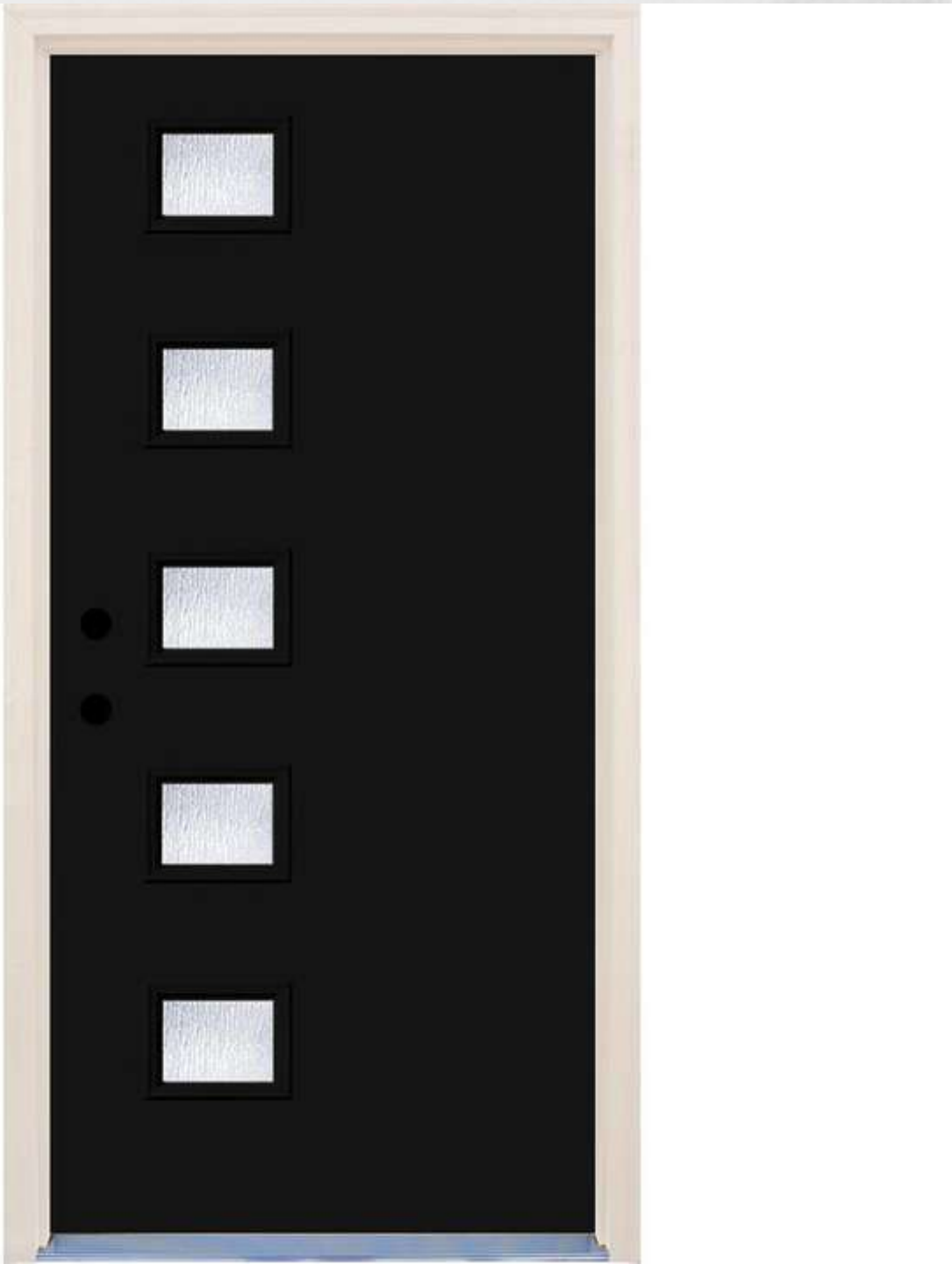


Standard Backsplash: Porcelain Tile



Upgraded Backsplash: Marble Mosaic

DOOR & HARDWARE SELECTION



Entrance Door



Entrance Door: Flat Black



Interior Lock: Locking System



Interior Door

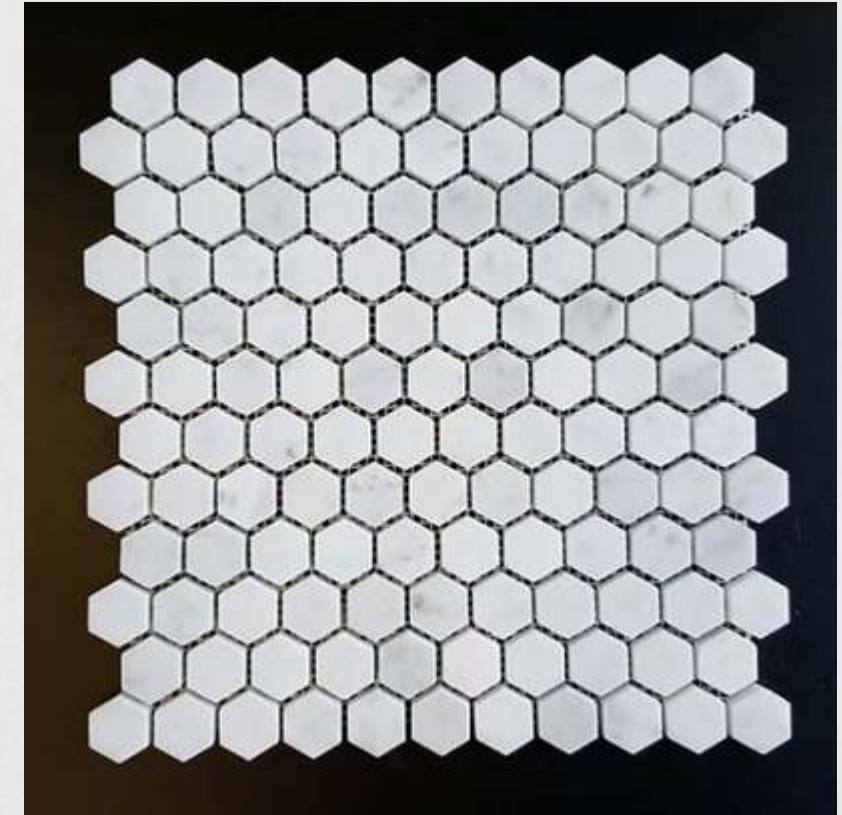
MASTER BATH OPTION: 3 BEDROOM



Shower System



Single Hole Faucet



Shower Floor - Mosaic



Option 1: Ceramic Tile



***Option 2: Upgrade - White Subway
Tile***



Undermount Sink

MASTER BATH - 2 BEDROOM WITH TUB



Kohler Single Hole



Kholer Underscore Bath



Kohler Undermount Sink

KITCHEN OPTION



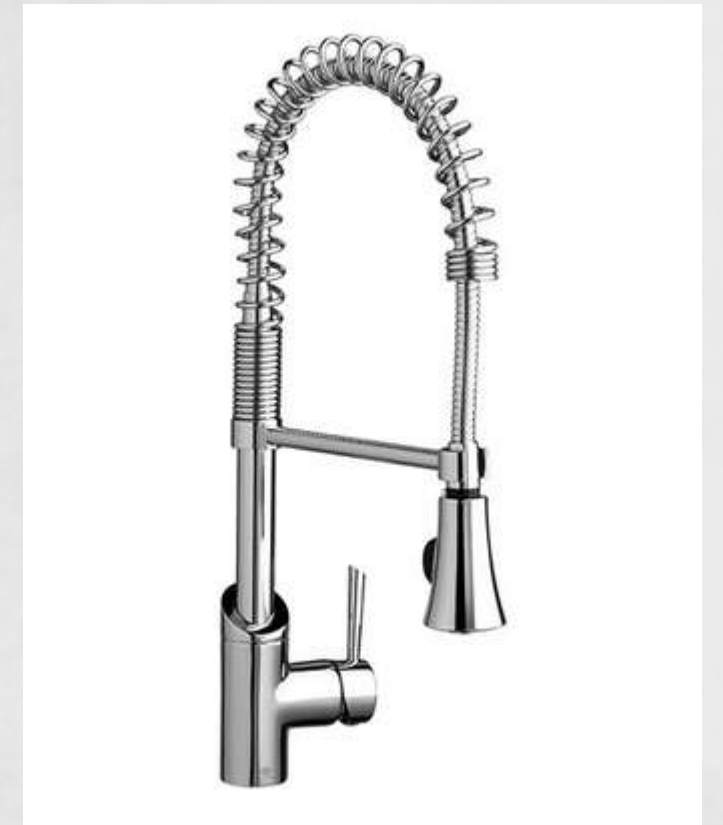
Option 1: Black & Chrome



Option 1: White Shaker



Option 2: Maple Shaker



Option 2: Chrome



Stainless Steel Kitchen Sink



Chrome Hardware



Granite Counter-Top



Pendant Light

WHIRLPOOL APPLIANCES



WHIRLPOOL APPLIANCES: STAINLESS STEEL

Option 1: Standard Refrigerator



Dishwasher



Microwave



Electric Range



Washer & Dryer



Option 2: Upgraded Refrigerator

DESCRIPTION

Exterior & Specifications:

- Exceptional 20 Unit Multi-Family Residences*
- Gated Community enclosed by 5 Ft perimeter fence*
- Solar Equipped Clubhouse & Gym*
- Community Rooftop Patio*
- Community Pool & Patio*

- 3 BedroomTownhomes -2044 Sq. Ft.*
- 2 Bedroom Condo - 1444 Sq. Ft.*
- 1 Bedroom Condo - 784 Sq. Ft.*

Interior:

- Wood Cabinetry*
- Mosiac & Subway Tiles*
- Woodlook Porcelain Floor tiles*
- Granite Countertop*
- Stair Finish - Wood or Tile*
- Stairs Construction - Wood and/or Metal*
- Walk in Closets - Custom Closet System*
- Reach In Closets: Minute Maid / Wood Shelves*

- Stainless Steel Appliances*
- Tankless Water Heater*
- Garbage Disposal*
- Extractor Fans vented outside*
- Bath & Standing shower (3 bed only)*
- Bath(1 & 2 bed only)*
- Base Board and Crown Moldings*
- Tray Ceiling in Living and Dining Room*

- Hurricane Shutter as an Upgrade*
- Solar Panel Upgrade - 3 Bedroom Units*

BUILDING MATERIALS

- MSR 20 Gauge Galvanized Decking Material*
- Concrete Blocks (6 & 8 inches)*
- 3000PSI Concrete*
- Concrete Roof and Sealant Coating*
- Double Insulated Window*
- Roof insulation - Open Cell spray Foam*
- Interior and Exterior Insulation*
- Exterior Wall - Marmerand*
- External Door - French/Sliding / Solid Door*
- Interior Door - Solid Core/ Panel*

LAP Aidion Amenities Disclaimer

ALL LAP Aidion ONE amenities are subjected to change without notice and subject to final planning approval by the Cayman Islands Building and Control Unit. LaPaidion Development services are descretionary and subjected to change without prior notice.



Sales - Remax Realty

Realtor - Susan Boyko

7 Mile Shops, 215B west Bay Rd.

Grand Cayman, CAYMAN ISLANDS

Tel: 1(345) 926-5501

Developer - IBCL

P.O Box 12053 APO

Grand Cayman, KY1-1010

CAYMAN ISLANDS

Tel: 1(345) 926-5501

Disclaimer: Renderings, 3D Images, and Photos depicted in this document is a representation and not the actual